

DELPHI Technical Panel, 8 June 2000

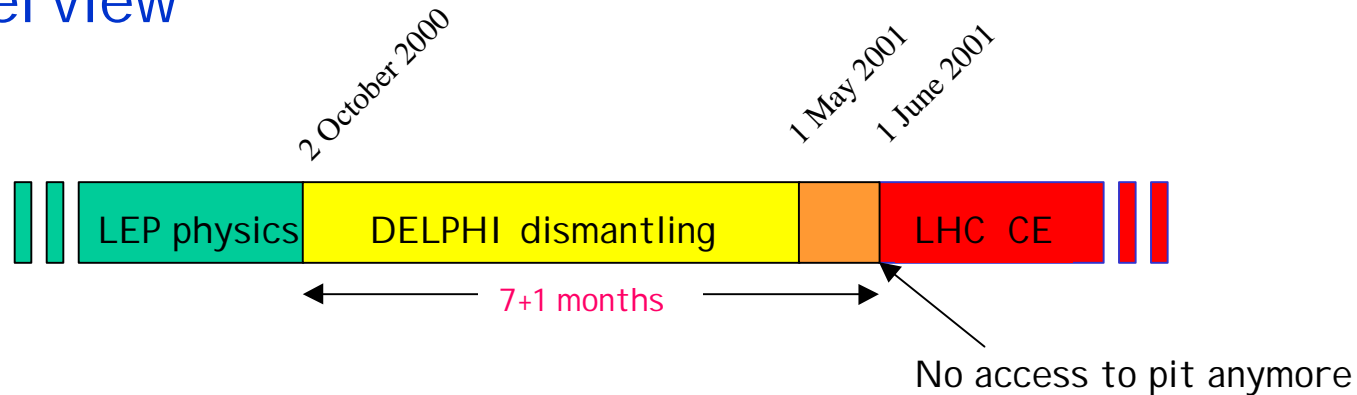


The Dismantling of DELPHI

Agenda

- Status of the Dismantling Planning C. Joram
- Safety during the DELPHI dismantling G. Lenzen
- Electronics and online cluster Ph. Gavillet
- A.O.B.

Overview



- By 1 June 2001 cavern has to be empty, except of barracks A, B, C (used by LHCb, incl. racks, but not crates !)
- Detector groups are responsible for dismantling of their detector and all auxilliary equipment (electronics).
- DELPHI takes care of organisation, handling, cables/pipework, part of transport, sale
- Dismantling/recuperation of gas racks -> Ferdi Hahn
- Organisation of electronics/online cluster -> Philippe Gavillet

A lot of useful information can be found on our webpage

http://joram.home.cern.ch/Joram/DELPHI_Dismantling/Dismantling.html

easier: DELPHI Home -> [about DELPHI](#) -> [DELPHI Dismantling](#)



Everything is/will be described in **Dismantling Project Report**, regularly updated on the WEB.

The DELPHI site in autumn 2000

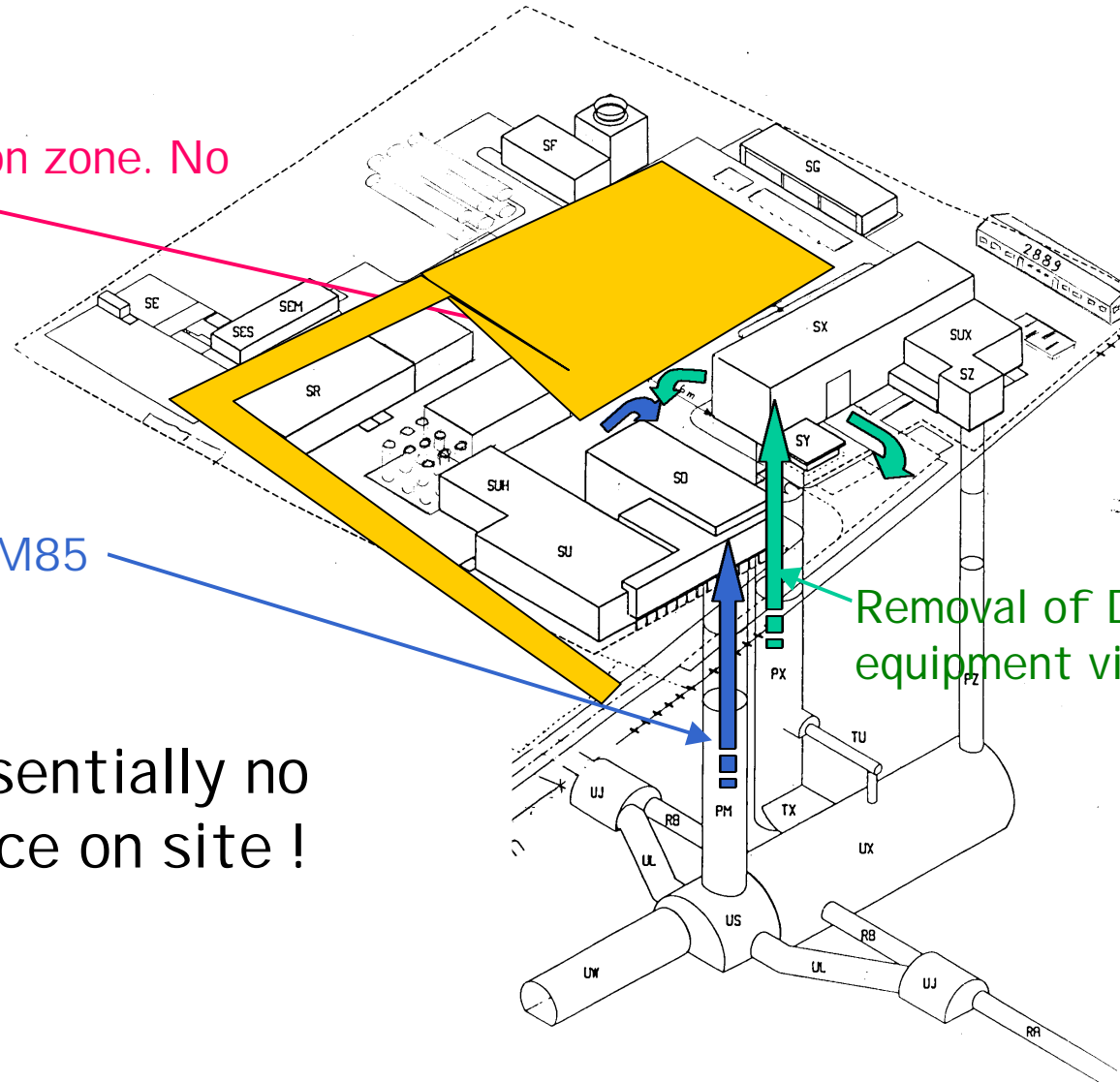


Construction zone. No access.

Removal of LEP equipment via PM85

Removal of DELPHI equipment via PZ85

There is essentially no storage space on site !



The I NB question (I NB = Installation Nucléaire de Base)

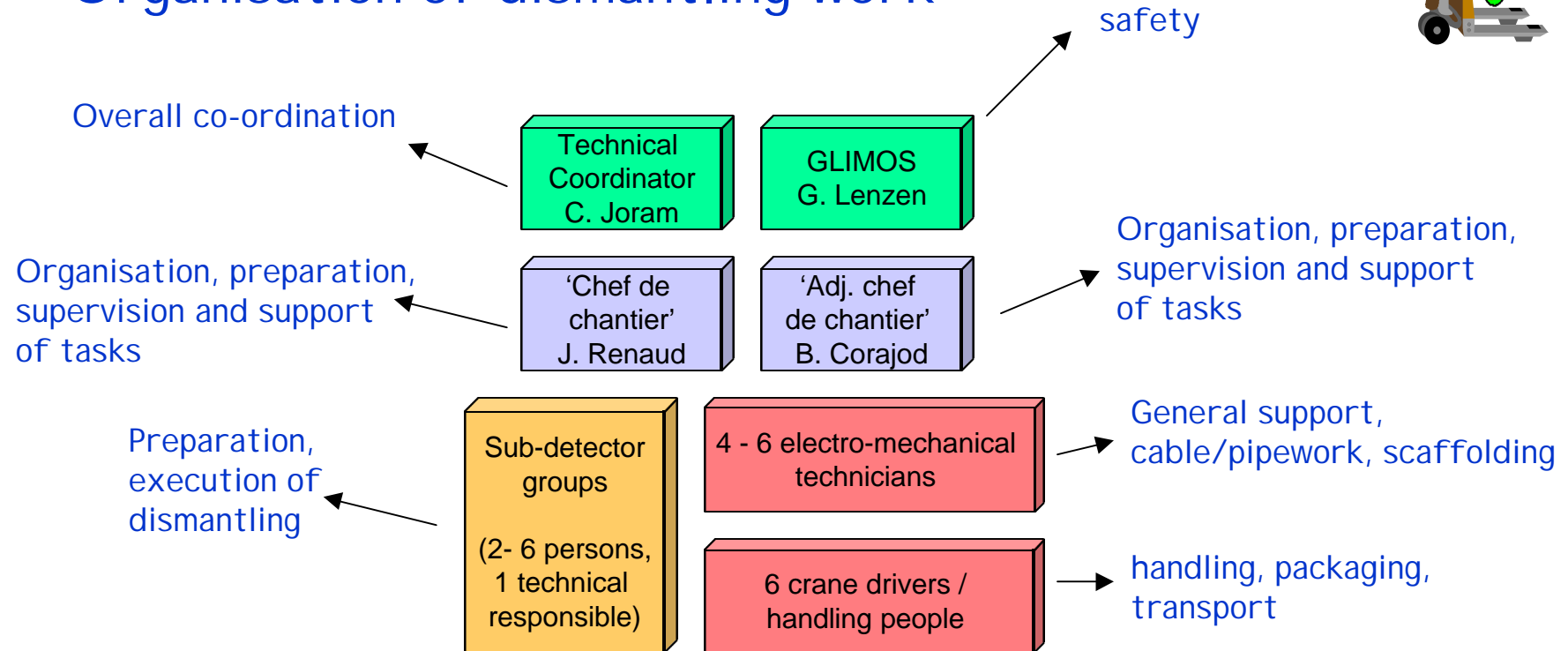


No final decision from French authorities (DSIN, IPSN),
however semi-official response (Fax -> A. Faugier, AC)

- Experiments are considered as I NB^{light}
- All other detectors considered as conventional waste (sorry about that).
- VSAT is classified 'TFA' (très faiblement actif). No major consequences.
- Experiments can be dismantled without traceability requirement
- Every single dismantled component or container will be individually checked for radioactivity.
- One RP technician permanently in cavern.

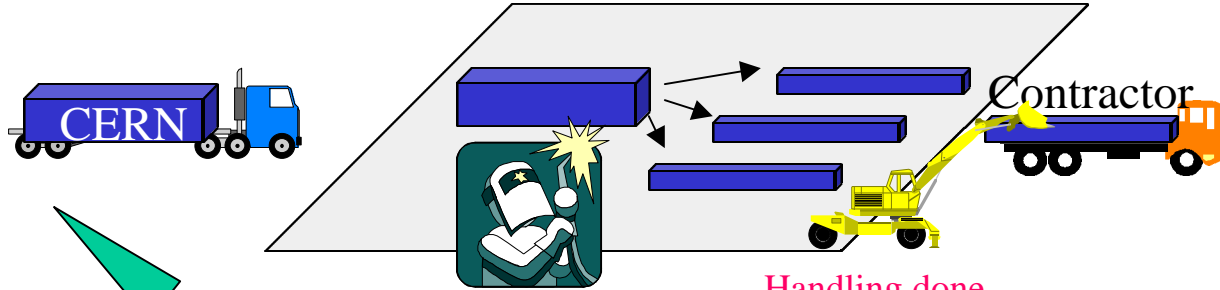
- However: We are on a site with a real I NB (=LEP).
- No mix of material, no passage between LEP and experimental area.

Organisation of dismantling work



At least 1 meeting/week. Technical responsables of detector groups have to be present 1 week before and during their dismantling task.

Central cutting zone (Preveessin or Peney)

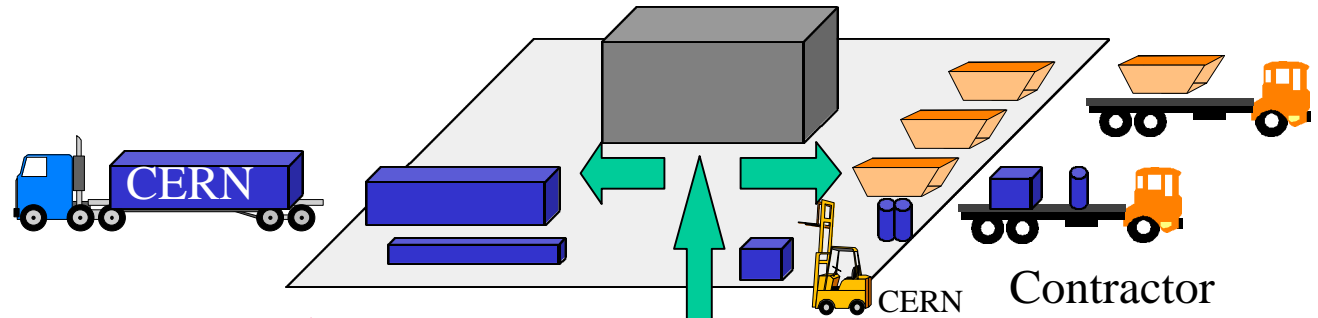


Cutting done by contractor

Handling done by CERN or contractor



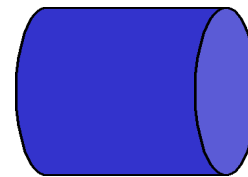
Experimental site with local transit zone



Very heavy or very large components

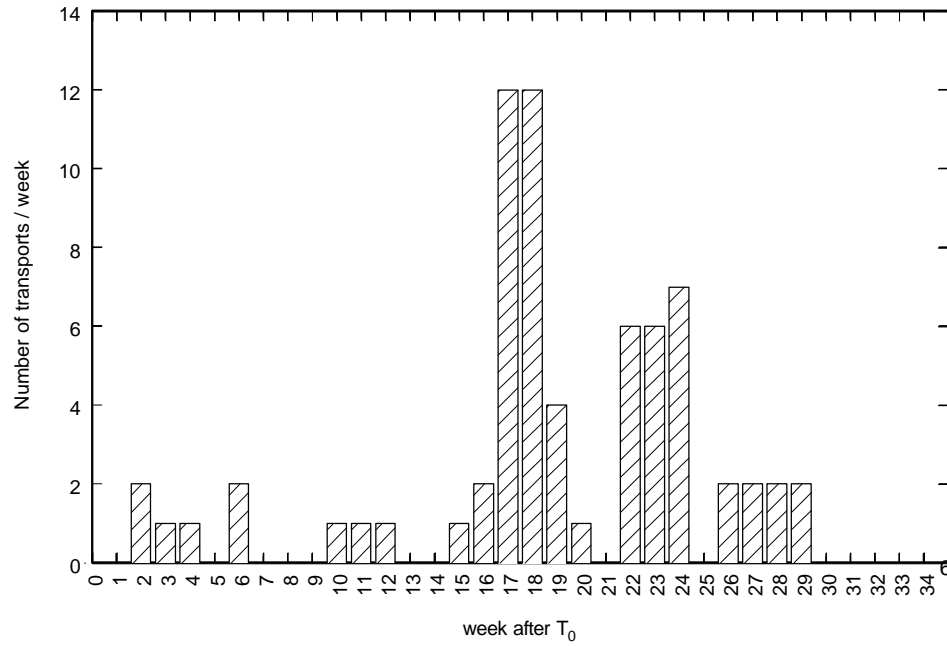
Small and medium size components

Logistics



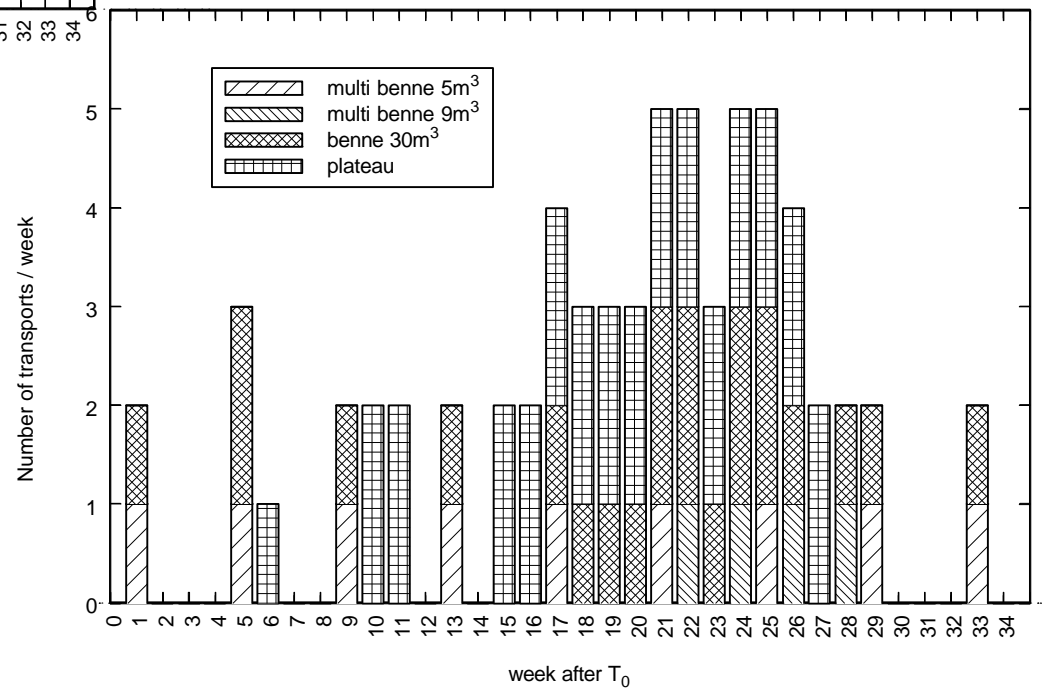
DELPHI

To be picked up at Central Cutting Zone



Tenatative Removal Plans



To be picked up at Point 8



Sale of material



	Main "metal"	Weight (tons)
1	Counting rooms	87
2	Composite materials	323
3	Steel "soft steel" (Fe360, St37, S235JR) 0.2% Carbon	2544
4	Low-grade steel	40
5	Copper	80
6	Aluminium	0
7	Lead Glass	50
8	Stainless steel	1
9	Racks + electronic circuits	19
10	Brass	0

- 13 European companies participated in call for tender.
- Tender documents for LEP + Experiments = 3.6 kg
- 2 bidder conferences
- 5 valid offers
- 2 offers end with positive sum
- DELPHI's income ~  ()
- Sale is handled by SPL division. Material is formally considered as CERN property. Income appears on DELPHI team account.



Requests for detectors for use in future experiments

No official requests yet !

Informal

- MUB: (with everything!) >> CosmoLHC
- HOF: (with everything!) >> CosmoLHC
- MUF: CosmoLHC expressed interest
- TOF: CosmoLHC expressed interest

Problems

- We have to sign very soon the sale contracts
- Perturbation of dismantling planning. Possibly extra manpower needed.
- Recuperation of cables a priori impossible.
- CosmoLHC will not be approved before the end of 2000.
- CosmoLHC has to organise disposal of material if project is rejected.

Bits and pieces



Exposition in SX hall All mock-ups / expo material has to be removed by end of September. Preliminary procedure: every detector group recuperates its pieces.

“Clean tent” in SX hall It has to disappear (within 1 week). Who wants it?

Worries

HPC 20 days foreseen for removal of 144 modules
Proposed method is rather labour and crane intensive, could be simplified. Some effort required now !
Afterwards extraction of sources (~ 60 man days).

TPC Hall for extraction of sources to be found (for how long?)

