



# 17<sup>th</sup> DELPHI Dismantling Meeting

Monday, 2 April 2001, 8:15 h

Progress during week 13/2001

Planning for week 14/2001

A.O.B

# Progress during last week (week 13/2001)



ID	Task Name	25 Mar '01							1 Apr '01	
		S	M	T	W	T	F	S	S	M
1	dismantle 2 base EC sectors (C)		[Blue bar]				✓			
2	displace plateforme C					[Blue bar]	✓			
3	remove racks C3							[Blue bar] ✓		
4										
5	clean up cables Barrel/D1,D2		[Blue hatched bar]					✓	to continue	
6										
7	remove cryo equipment D3		[Red hatched bar]					✓	to continue	

Very nice progress. No problems in cavern, but some surprises concerning transport of heavy pieces + cutting in Peney.

Barrel moved ! 1<sup>st</sup> time since 1989 (?)



## Transports to Peney foreseen for week 13.

Lundi: 1 transport. Point 8 (DELPHI) -> Peney. 2 secteurs EC lourd. 2 x 27 T.

Mardi: 1 transport. Point 6 (OPAL) -> Peney. 1 module 70T.

Mercredi: 1 transport. Point 8 (DELPHI) -> Peney. 2 secteurs EC lourd. 2 x 27 T.

Mardi: 1 transport. Point 6 (OPAL) -> Peney. 1 module 70T. Groupe 3.

Vendredi: 1 transport. Point 8 (DELPHI) -> Peney. 2 secteurs EC lourd. 2 x 27 T.

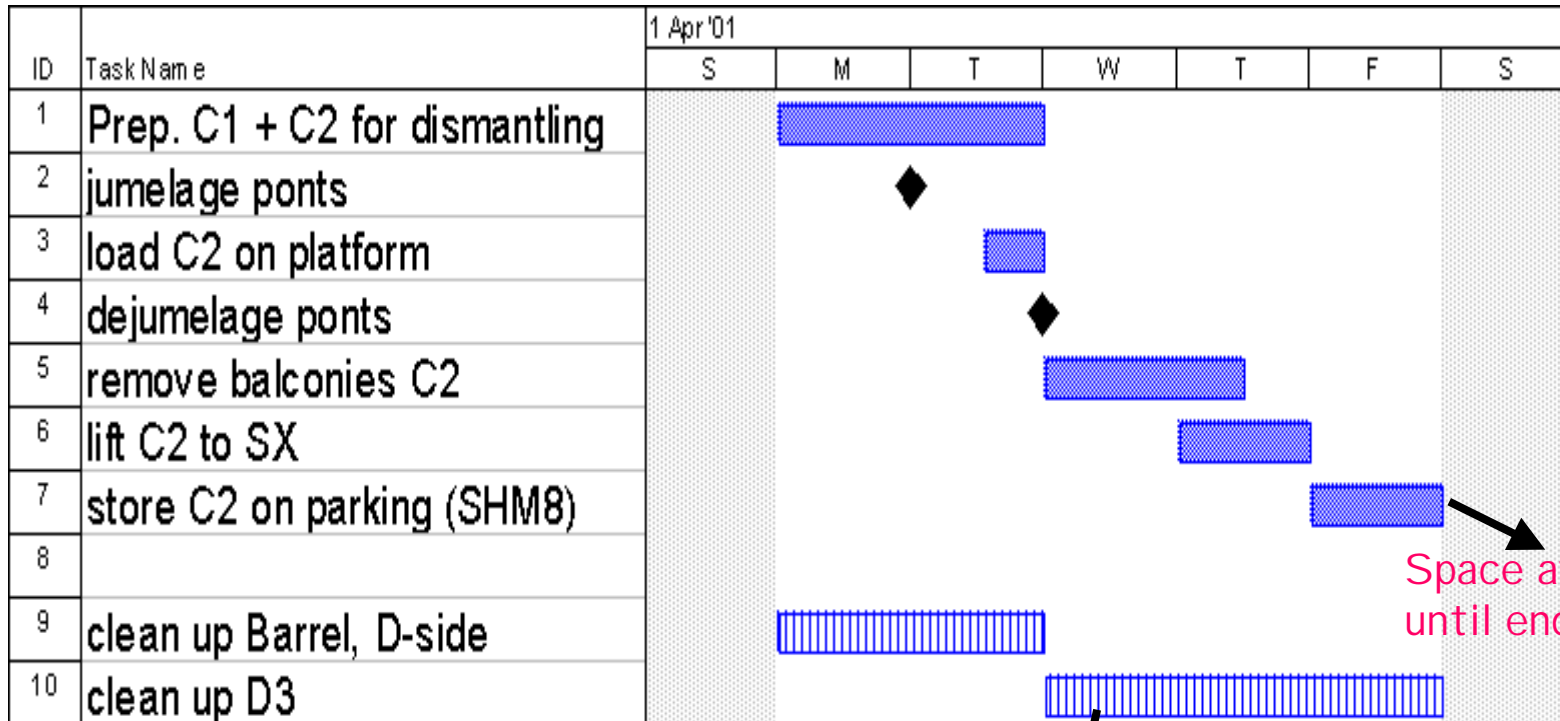
## Transports carried out in week 13.

Lundi/Mardi : 1 transport. Point 8 (DELPHI) -> Peney. 2 secteurs EC lourd. 2 x 27 T.

Vendredi: 1 transport. Point 6 (OPAL) chargement -> Peney. 1 module 70T.  
(aujourd'hui)

- Between Tue and Fri: only 2 DELPHI sectors cut !
- Portique not fully operational. The Swiss ask for
- 250 CHF/transport if total weight > 100 T.
- + 250 CHF/transport if police escort required.

# Planning for this week (week 14/2001)



Space available until end of April

1 circuit breaker -> DESY Hamburg  
 Power Supplies -> ???

## Transports foreseen for this week (week 14/2001)



- 1 benne 7m<sup>3</sup>, group 9 (rack/electronics)
- Tue / Wed  $\geq 2$  sectors 27 T.